

"THE *Colour*
TO BE YOUR BEST"



PRISMTM

COLOUR COATS

AN ISO 9001 : 2015 CERTIFIED COMPANY

We, **PRISM COLOUR COATS** Are Leading Manufacture, Exporter And Supplier of the Coating Powder In India. We Stands As Reliable Source Of High Quality And Durable Coating Powder.

We Are offering Best Quality Range Of Different Finishes like Matt, Glossy, Structure, Metallic, Satin, Texture and Antique in all Different Colours of Powder Coatings in various Chemistries.

Powder is supplied to a wide range of industries, such as Architectural, Appliances, Automotive, IT, Furniture, General Industries and Trade Coaters. We develop products ideal for current application systems, compliant with environmental, legislative and customer needs.

WE THINK :

Being a key supplier to your Operation Prism Coats has got Exactly. What it takes to be a partner in your success. We are totally Committed to the Integrated growth through development of new shades and provide quality products at competitive prices.

Why Us?

We have achieved a remarkable and strong position in the market due to our excellent quality range of products that we provide in several specifications.

AN ISO 9001 : 2015 CERTIFIED COMPANY

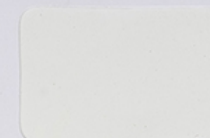
ACCREDITATION



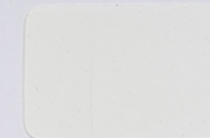
GLOSSY



CLASSIC WHITE
EP101



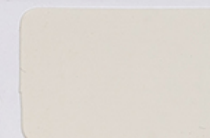
PURE WHITE
EP103



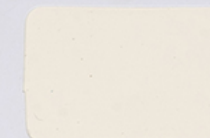
A.MILKY WHITE
EP165



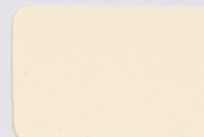
R.WHITE
EP198



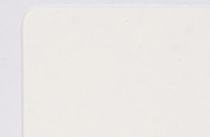
OFFWHITE
EP190



LIGHT CREAM (RAL 9010)
EP197



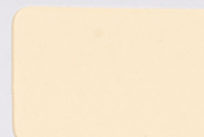
IVORY
EP106



RAL 9003
EP182



V. IVORY
EP152



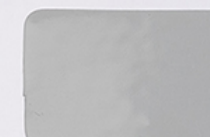
DARK IVORY
EP108



G.IVORY
EP189



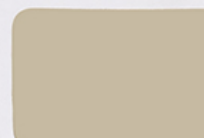
HAVELLS GREY
EP111



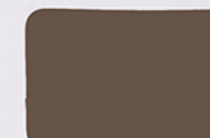
A.MUNSHELL GREY
EP176



STEEL GREY
EP110



SIEMENS GREY
EP114



BISCUIT
EP118



D A GREY (RAL 7012)
EP113

THIS CARD REPRESENTS OUR STANDARD SHADES BUT SLIGHT VARIATION MAY OCCUR.

RED colour is used to show two totally different category, one is "LOVE " and the other is "DANGER"



GLOSSY



USHA BEIGE
EP109



JASMIN YELLOW
EP119



GOLDEN YELLOW
EP120



D.GOLDEN YELLOW (RAL 1033)
EP160



DEEP ORANGE (RAL 2003)
EP121



A.PURE ORANGE (RAL 2004)
EP173



SAFEX RED (RAL 2002)
EP122



SIGNAL RED (RAL 3000)
EP123



P O RED (RAL3001)
EP124



MAROON (RAL 4004)
EP125



BABY PINK
EP126



RUBIN PINK (RAL 4010)
EP127



WILD LILAC
EP135



WOOD BROWN
EP128



V.BROWN (RAL 8019)
EP174



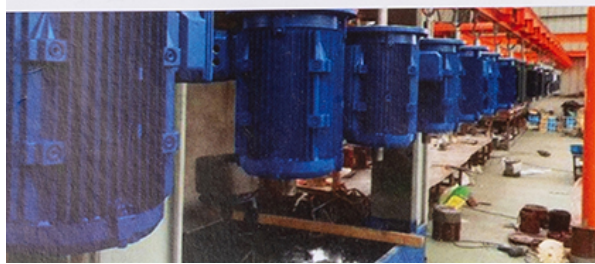
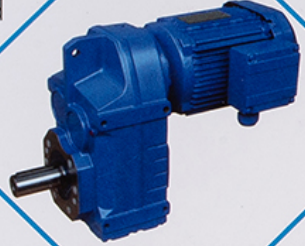
BROWN (RAL 3007)
EP184



BLACK
EP142

Blue is a cool colour, it's the colour of the sky and sea.

It symbolises stability, loyalty, confidence, intelligence and peace.



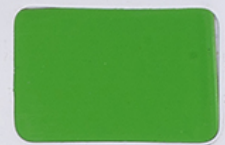
GLOSSY



A PISTA GREEN
EP147



RADIUM GREEN
EP205



RAL 6018 GREEN
EP175



PARROT GREEN
EP148



UDINI GREEN
EP132



R.BUS GREEN (RAL 6005)
EP161



SKY BLUE
EP136



DEEP BLUE
EP137



VAZURE BLUE (RAL 5017)
EP186



VIP BLUE
EP141



KANGAROO BLUE
EP156



WATER BLUE
EP138



PEPSI BLUE (RAL 5002)
EP140



OXFORD BLUE
EP168

TRANSPARENT



RED



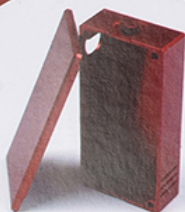
GREEN



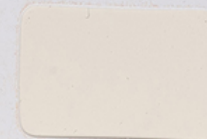
BLUE

THIS CARD REPRESENTS OUR STANDARD SHADES BUT SLIGHT VARIATION MAY OCCUR.

BROWN, the colour of earth, wood, stone, wholesomeness, reliability, elegance, security, healing, home, grounding, foundations, stability, warmth, and honesty



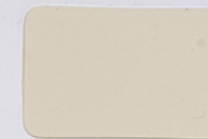
MATT



A.WHITE
MT258



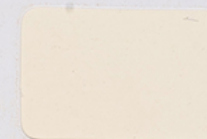
OFF WHITE
MT201



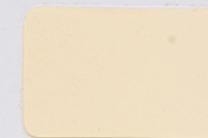
BROKEN WHITE
MT202



RAL 9001 WHITE
MT271



LIGHT CREAM (RAL 9010)
MT265



IVORY
MT203



MUNSHELL GREY
MT207



CHOCOLATE BROWN
MT214



D A GREY
MT208



NUT BROWN
MT213



R.BROWN
MT250



KANGAROO BLUE
MT220



VIP BLUE
MT221



WATER BLUE
MT219



PENCIL GREY
MT209



NEW BLACK
MT240



SUPER BLACK
MT223

THIS CARD REPRESENTS OUR STANDARD SHADES BUT SLIGHT VARIATION MAY OCCUR.

WHITE, an inherently positive colour, is associated with purity, virginity, innocence, light, goodness, heaven, safety, brilliance, illumination, understanding, cleanliness, faith, beginnings, sterility, spirituality, possibility, humility, sincerity, protection, softness, and perfection.



STRUCTURE



ULTRA WHITE
ST502



PURE WHITE
ST555



SP BROKEN WHITE
ST539



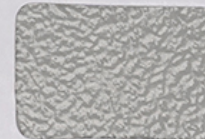
IVORY
ST562



DARK IVORY
ST503



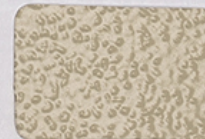
HAVELLS GREY
ST556



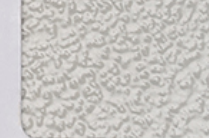
A.MUNSHELL GREY
ST533



SP RAL 7035 GREY
ST534



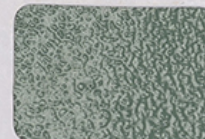
SIEMENS GREY (RAL 7032 GREY)
ST504



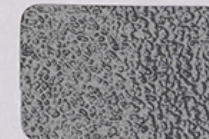
RAL 7035 GREY
ST517



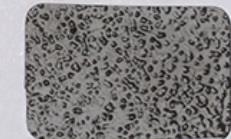
SP RAL 7032 GREY
ST595



LIGHT GREY
ST509



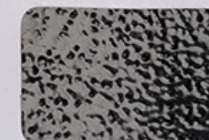
D A GREY
ST507



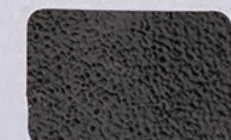
DARK GREY
ST508



GRAPHITE GREY (RAL 7015)
ST531



RAL 7021 GREY
ST580



BLACK MATT
ST584

THIS CARD REPRESENTS OUR STANDARD SHADES BUT SLIGHT VARIATION MAY OCCUR.

The **PURPLE** colour is mainly associated with the nobility, creating an impression of luxury, wealth, and extravagance. Positive features of purple are: oddities, creativity, resourcefulness, selflessness, mystery, fantasy, future.



STRUCTURE



YELLOW
ST510



ORANGE
ST511



SIGNAL RED
ST547



P O RED
ST512



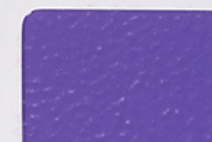
MAROON
ST513



RUBIN PINK
ST545



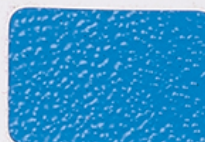
RAL 6018 GREEN
ST542



WILD LILAC
ST543



MACHINE GREEN
ST519



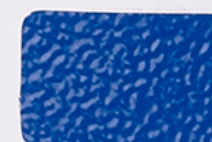
SEA BLUE
ST520



WATER BLUE
ST521



KANGAROO BLUE
ST522



VIP BLUE
ST523



BROWN
ST515



CHOCOLATE BROWN
ST516



GD SILTRAN BROWN
ST593



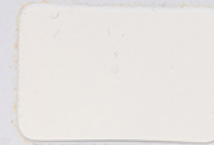
BLACK
ST524

THIS CARD REPRESENTS OUR STANDARD SHADES BUT SLIGHT VARIATION MAY OCCUR.

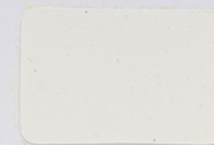
YELLOW is the colour of SUN and without SUN LIGHT it would be completely dark on Earth.



PURE POLYESTER



PURE WHITE
PP427



A.MILKY WHITE
PP433



RAL 9003
PP442



IVORY
PP402



GOLDEN YELLOW
PP405



CHOCOLATE BROWN
PP423



VIP BLUE
PP425



DEEP ORANGE
PP432



PEPSI BLUE
PP406



BLACK GLOSSY
PP407



BLACK MATT
PM410



MILKY WHITE
MT249



P O RED
MT246



UDINI GREEN
MT244



VIP BLUE
MT245



CHOCOLATE BROWN
MT243

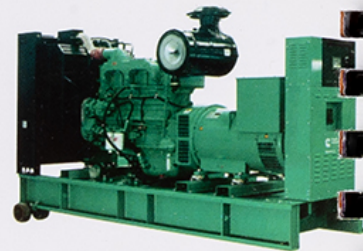


BLACK
MT231

DEAD MATT

THIS CARD REPRESENTS OUR STANDARD SHADES BUT SLIGHT VARIATION MAY OCCUR.

GREEN Colour is very special
because its Colour of "LAND",
which feed to all of us.



TEXTURE



BROKEN WHITE
TE619



A.MUNSHELL GREY
TE614



RAL 7037 GREY
TE622



SIGNAL RED
TE624



GD SILTRAN BROWN
TE623



BLACK
TE606



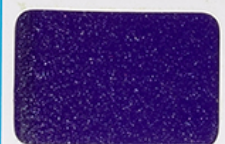
PALE GOLD



SILVER GREY



PALE COPPER



SPARKLE SILVER



BLACK GREY

METALLIC



BLACK

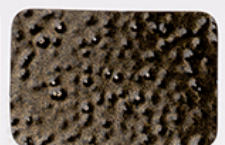


RED



BLUE

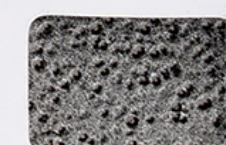
ANTIQUÉ



GOLD



COPPER



SILVER

THIS CARD REPRESENTS OUR STANDARD SHADES BUT SLIGHT VARIATION MAY OCCUR.

TYPES OF POWDER COATINGS

EPOXY POLYESTER POWDER

Epoxy polyester powder coatings are based on a combination of polyester and epoxy resins. Hybrids perform well in non-weather able possible, hence this chemistry finds wide range of applications.

PURE EPOXY POWDER

These are used where the application is indoors; away from direct sunlight and where chemical resistance is required. The coating is smooth with no orange peel. This chemistry of powder coating finds its applications where maximum corrosion and chemical resistance is required.

PURE POLYESTER POWDER COATING

Pure Polyester powders are good for outdoor use where considerable amount of sunlight is present. They have good weathering and mechanical properties and resistance to over baking. It is used for glossy and semi glossy finishes.

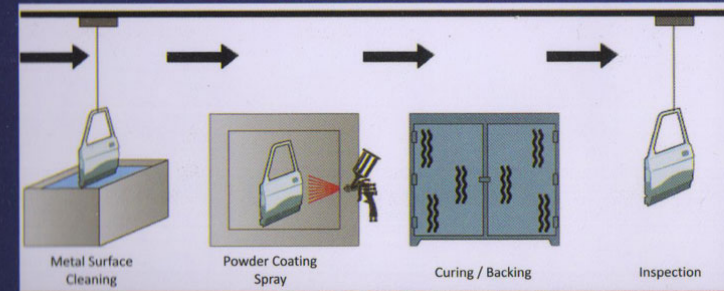
POWDER COATING APPLICATIONS

Appliances	Refrigerator, Washing Machine, Fans, Air Conditioners, Storage Racks, Microwave Ovens etc.
Machinery & others	Furniture, Almirah - Cupboard, Office Equipment, Water Coolers, Computers, Agriculture Equipment Etc,
Electrical Industries	Pumps, Submersible Pumps, Motor's Starters, Resistors, Capacitors, Lamp shades, Switch Board, Panel Boards etc,
Fancy Items	Cosmetics & Beverages Bottles, Metal Grills, Swings, Gym Equipments item.
Automobiles	Children Bicycle, Bumpers, Wheel Covers, Radiator Grills, Stands, Clutch, leaver, Basket. Number Plates, Accessories etc.

ADVANTAGES OF POWDER COATING :

- ▶ No Primer needed. ▶ Over spray losses are greatly reduced.
- ▶ Labour cost are reduced. ▶ Reject rates are low.
- ▶ Cleaning of wet paint booth is eliminated
- ▶ Powders are supplied ready for use and hence do not require thinning or mixing before application.
- ▶ Plant occupies less space
- ▶ Cost of paint storage is reduced.
- ▶ No flame proof equipment needed.
- ▶ Powders has very high mechanical strength.
- ▶ Powders has got high corrosion resistance.

POWDER COATING APPLICATION PROCESS



METAL SURFACE CLEANING STANDARD PROCESS (7 Tank)

- ➔ LOADING ➔ DEGREASING ➔ WATER RINSE - 1 ➔ DERUSTING
- ➔ WATER RINSE - 2 ➔ ACTIVATION ➔ ZINK PHOSPHATE
- ➔ WATER RINSE - 3 ➔ PASSIVATION ➔ UNLOADING
- ➔ AIR / HIT DRYER ➔ POWDER COATING

POWDER COATING

A process called electrostatic spray deposition (ESD) is typically used to achieve the application of the powder coating to a metal substrate. This application method uses a spray gun, which applies an electrostatic charge to the powder particles, which are then attracted to the grounded part.

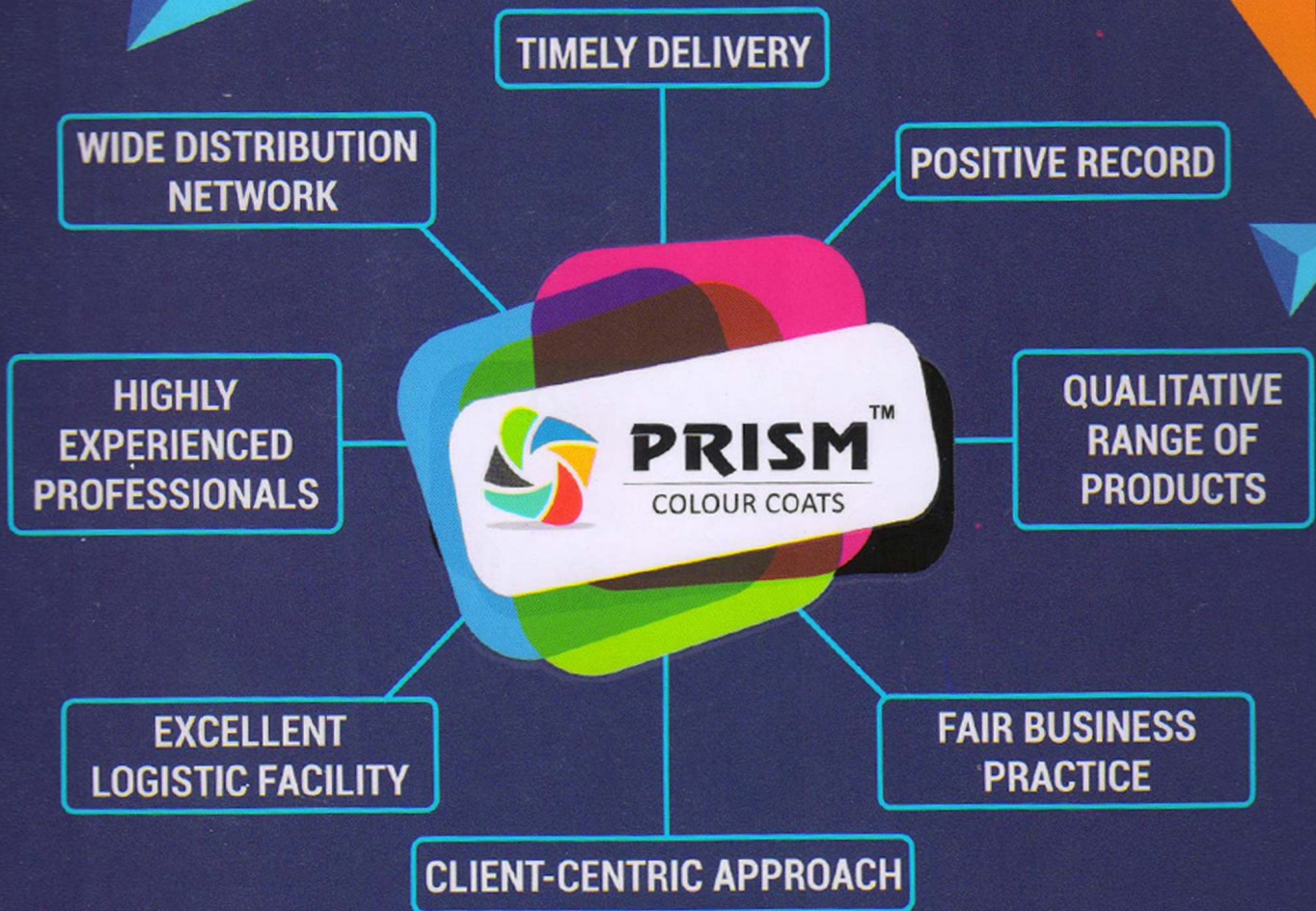
CURING TEMPERATURE

- (1) EPOXY POLYESTER GLOSSY / SEMI GLOSSY 180°C - 10 MINUTES
- (2) PURE EPOXY / MATT FINISH 200°C - 10 MINUTES
- (3) PURE POLYESTER 200°C - 10 MINUTES

STORAGE & PACKING:

Store in closed Cool room (Below 25°C) in dry condition exposure to direct sunlight heat and high humidity should be avoided for best performance. Use within six months partly Used bags must be tightly closed after each removal and stored carefully inside the carton in cool dry storage room.

PACKING : 10KG & 20KG Box Packing



PRISM COLOUR COATS

Plot No. 88/89, Shree Govardhan Industrial, B/h. Telephone Exchange,
Navi Siyalaj, Pipodara - 394110, Surat, Gujarat.

CUSTOMER CARE ☎ 097247 73918

✉ prismcoats@gmail.com ☎ 096875 81818 ☎ 096387 81818

Scan QR & Visit Our Catalogue



DISCLAMATION : Since PRISM COLOR COATS has no control over the working conditions and application procedures adopted in your factory, we do not claim that the result obtained at your works. would he same as described in this Shade Card. Users are advised to establish for themselves that the product or process deserted in this Shade Card are satisfactory for their use. NO liability would be accepted by us for any damage. injury or toss resulting from the use of the information, given in this Shade Card.